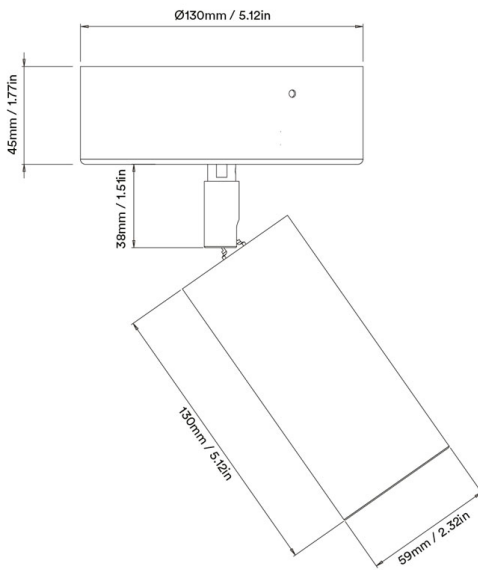
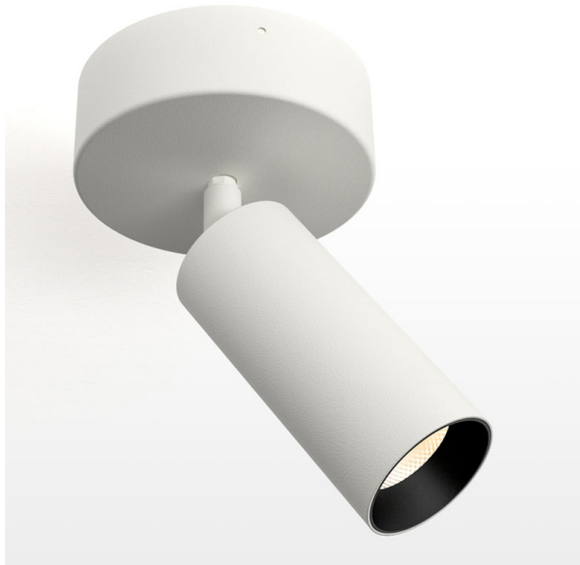




Project Reference - _____

Product Reference - _____



Air Integrated Spotlight

Description –

Integrated Power supply is contained within the base. Use when can not remote mount a PSU.

Orluna uniquely achieves richer reds through a bespoke phosphor LED giving an exceptionally high average colour rendering (CRI: 98) and the best red rendering available worldwide (R9: 99). As reds are important in accurate representation of many colours (including true whites) the Origin makes colours look as intended.

General –

Manufacture:	Orluna
Designer:	Graham Lunn
Material:	Aluminium ADC12
Bezel Finish:	White / Black / Antique Brass / Polished Brass / Antique Bronze / Brushed Chrome / Polished Chrome / Antique Copper / Polished Copper
Baffle Finish:	Black / White / Copper
Overall Diameter:	130mm Ø
Overall Depth:	213mm
Base Diameter:	130mm Ø
Base Depth:	45mm
Fitting Diameter:	59mm Ø
Fitting Depth:	130mm
Adjustability:	90° Tilt 360° Rotate
Warranty:	5 Years

Electrical Spec –

Mounting:	Downlight
Lamp:	LED Unit
Degree:	See Page 2
Wattage:	See Page 2
Lumens:	See Page 2
Kelvin:	See Page 2
CIR:	See Page 2
TM30:	See Page 2
Binning:	See Page 2
Voltage:	See Page 2
Current:	See Page 2
Dimmable:	See driver section below
IP rating:	IP54 / IP65
Fire rated:	Fire plate available

Driver Spec –

Protocols:	Mains Dim / DALI / 0-10V / Non-Dim
Dim to Dark:	0.1% Lux
Distance:	20m
Emergency:	Emergency pack available

Lighting Showroom –

104 Talbot Road, London, W11 1JR / +44 (0)20 7727 0606
www.allsquarelighting.co.uk
sales@allsquaregrp.co.uk

Specifications subject to change without prior notice.



2700K

Electrical Spec — Soft Specialty

	Medium	Wide	Flood	Wash	Crisp
Degree:	28°	43°	53°	60°	37°
Wattage:	11.4W	11.4W	11.4W	11.4W	11.4W
Lumens:	682lm	737lm	721lm	742lm	793lm
CIR:	98	98	98	98	98
Binning:	2 Step	2 Step	2 Step	2 Step	2 Step
Voltage:	34V				
Current:	300mA				

3000K

Electrical Spec — Soft Specialty

	Medium	Wide	Flood	Wash	Crisp
Degree:	28°	43°	53°	59°	37°
Wattage:	11.4W	11.4W	11.4W	11.4W	11.4W
Lumens:	715lm	770lm	761lm	767lm	831lm
CIR:	98	98	98	98	98
Binning:	2 Step	2 Step	2 Step	2 Step	2 Step
Voltage:	34V				
Current:	300mA				

Code —	Engine Type	Bezel	Colour Temp	Driver	Beam Width	Bezel Colour	Baffle Colour	Options
	OR	AI	27 27 / 2700K 30 / 3000K 40 / 4000K	M M / Mains Dim D / DALI O / 0-10v N / Non Dim X / No Driver	S U / Ultra S / Spot N / Narrow M / Medium W / Wide F / Flood H / Wash C / Crisp L / Elliptical Linear O / Elliptical Oval	W W / White RAL 9010 D / White RAL 9003 E / White RAL 9016 B / Black RAL 9005 F / Antique Brass G / Polished Brass J / Antique Bronze K / Brushed Chrome L / Polished Chrome H / Antique Copper I / Polished Copper C / Other RAL	BB BB / Black 9005 WB / White 9010 DB / White 9003 EB / White 9016 C / Other RAL MB / Polished Brass JB / Antique Bronze KB / BrushedChrome LB / PolishedChrome IB / Polished Copper MB / Other Metallic	54 K 54 / IP54 65 / IP65 P / Sea & Spa IP65 H / Honeycomb N / Frosted Lens Z / LSZH Cable K / Click Connector

Lighting Showroom —